



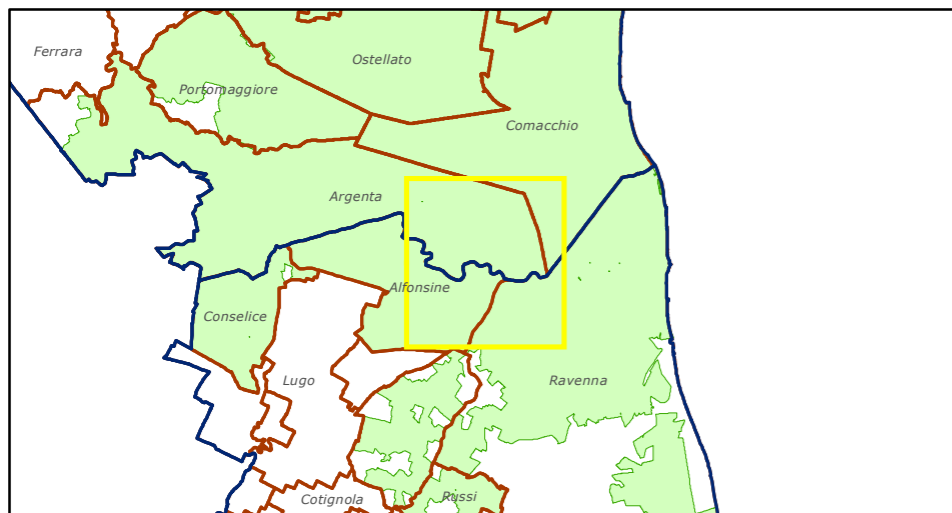
TERRITORIO INTERESSATO DALLA STRATEGIA DI SVILUPPO LOCALE LEADER 2023-2027 DEL G.A.L. DELTA 2000

Comune di Ravenna (8/8)






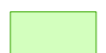
Scala 1:50.000



Elaborazione
SIT Provincia di Ravenna



Legenda

-  Confini provinciali
-  Confini comunali
-  SIC/ZSC e ZPS
-  Parchi e Riserve Naturali
-  Aree di Riequilibrio Ecologico
-  Aree Leader 2023

